

Shop » filtri antidisturbo emi » filtri monofase

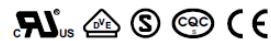


FILTRO 6A 250V AC, MONOFASE SCATOLATO EMI

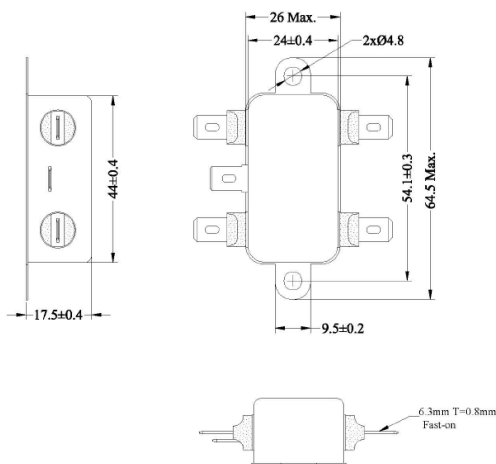
DA 1A A 20A (CUL-VDE-SEMKO-CE-CQC)
TENSIONE 115/250V AC - 50/60HZ
CATEGORIA CLIMATICA: HPF 25/110/21
MASSIMA CORRENTE DI FUGA:
@115VAC 50/60HZ: 0,3MA
@250VAC 50/60HZ: 0,6MA
HI-POT L-N: 1450VDC
HI-POT L-G: 2250VDC

COD: **06SS4-1AA1-B**

MARCA: **HIGH&LOW CORP.**



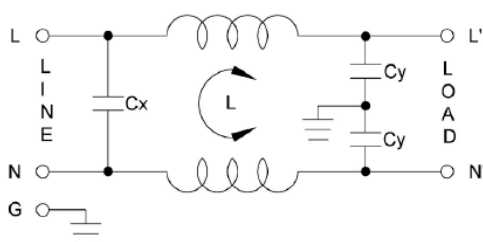
DISEGNO



SPECIFICHE

Tensione	250V AC
Montaggio	a telaio
Modello	1ph
Corrente Nominale	6A
N° di Stadi	1

CIRCUITO



CURVA DI ATTENUAZIONE

